

3206.01 IDENTIFICATION



Palm® Treo™ Wireless Headset

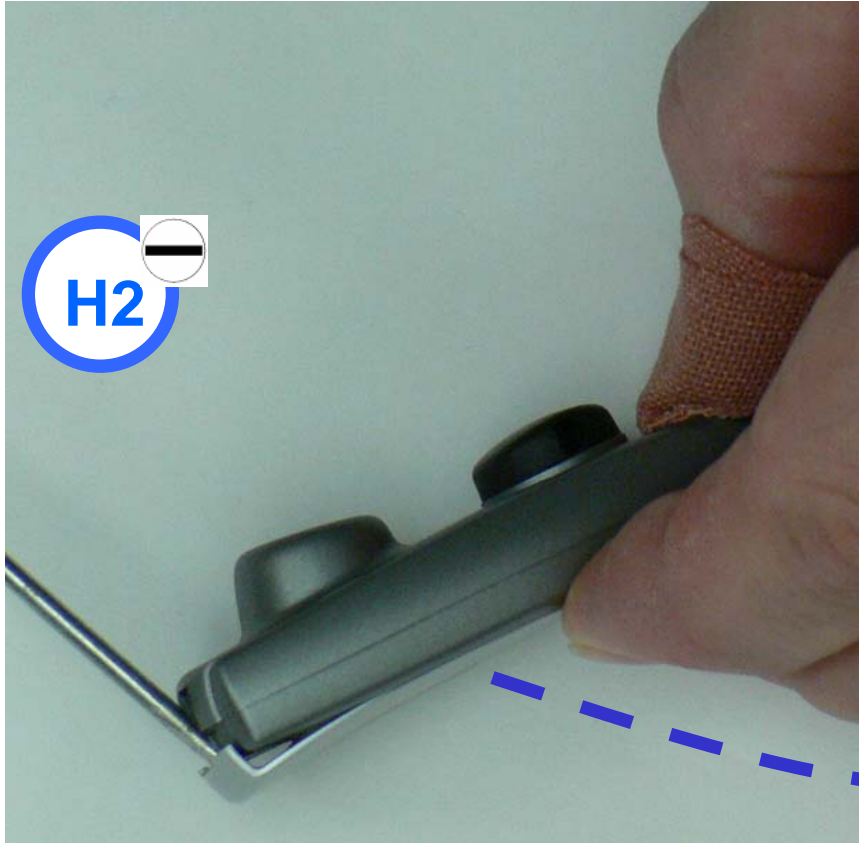






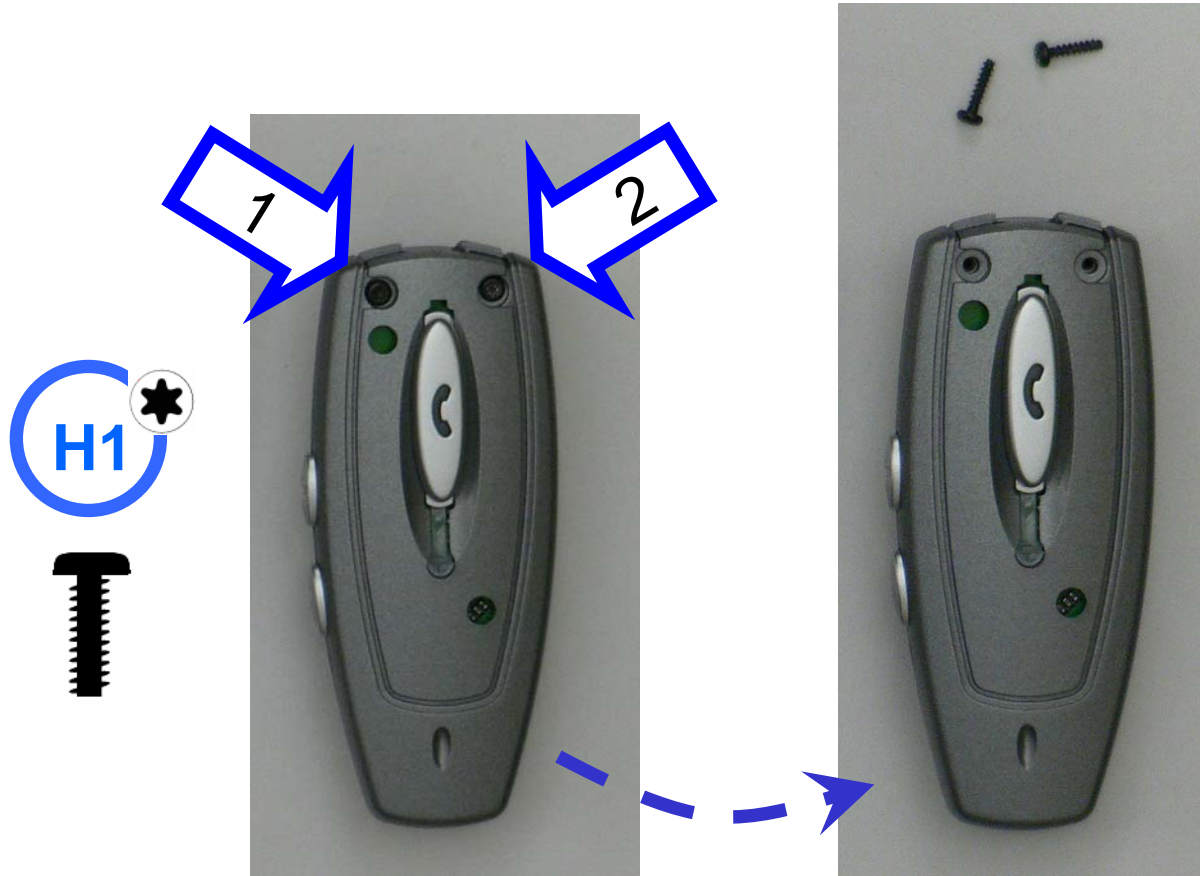


3206.04 PRY BEZEL TO RELEASE ADHESIVE

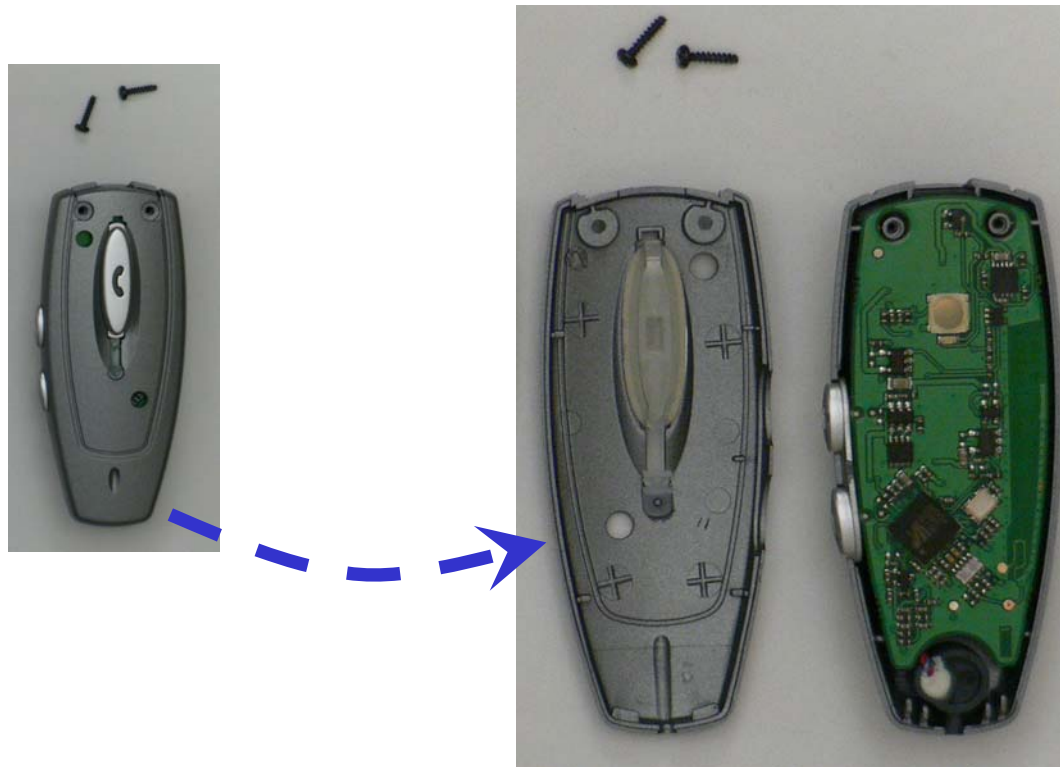




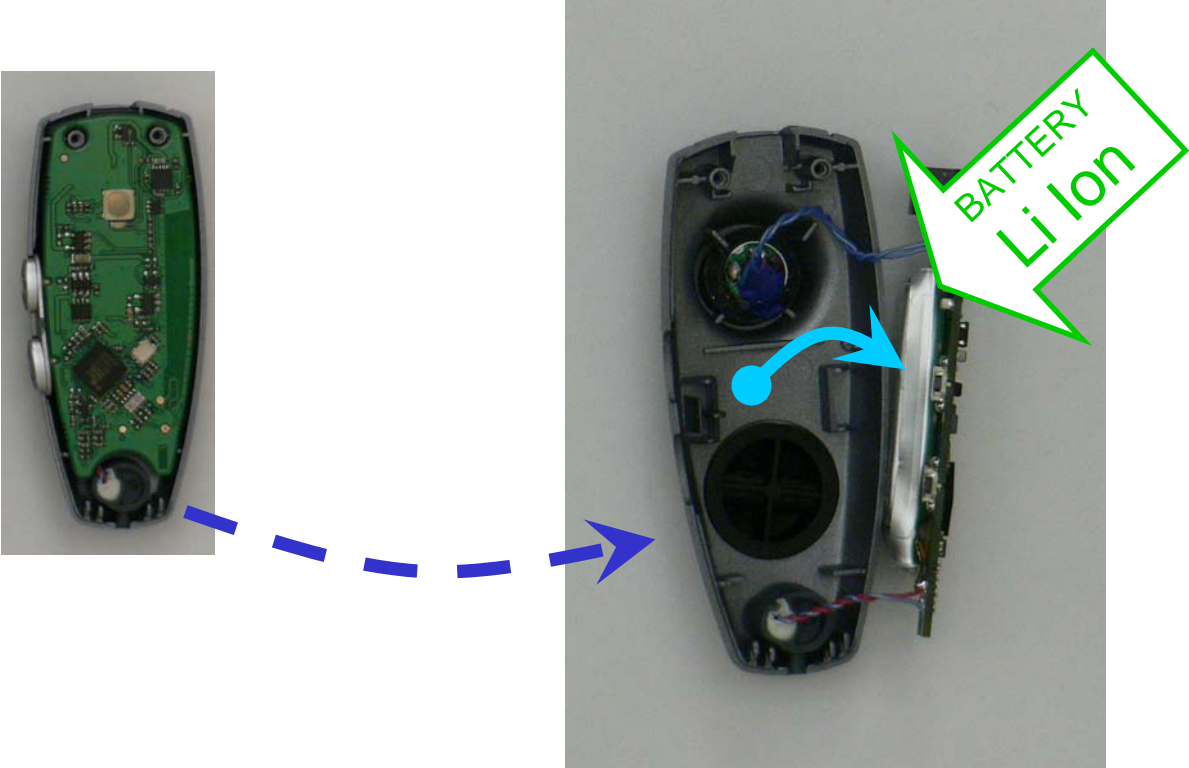
3206.05 REMOVE ANTENNA COVER AND SCREWS (2)



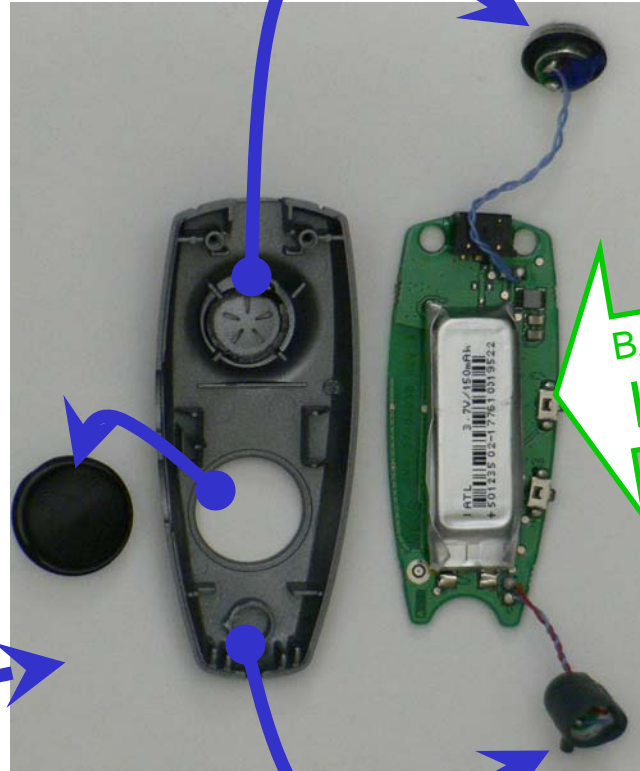
3206.06 REMOVE FRONT COVER



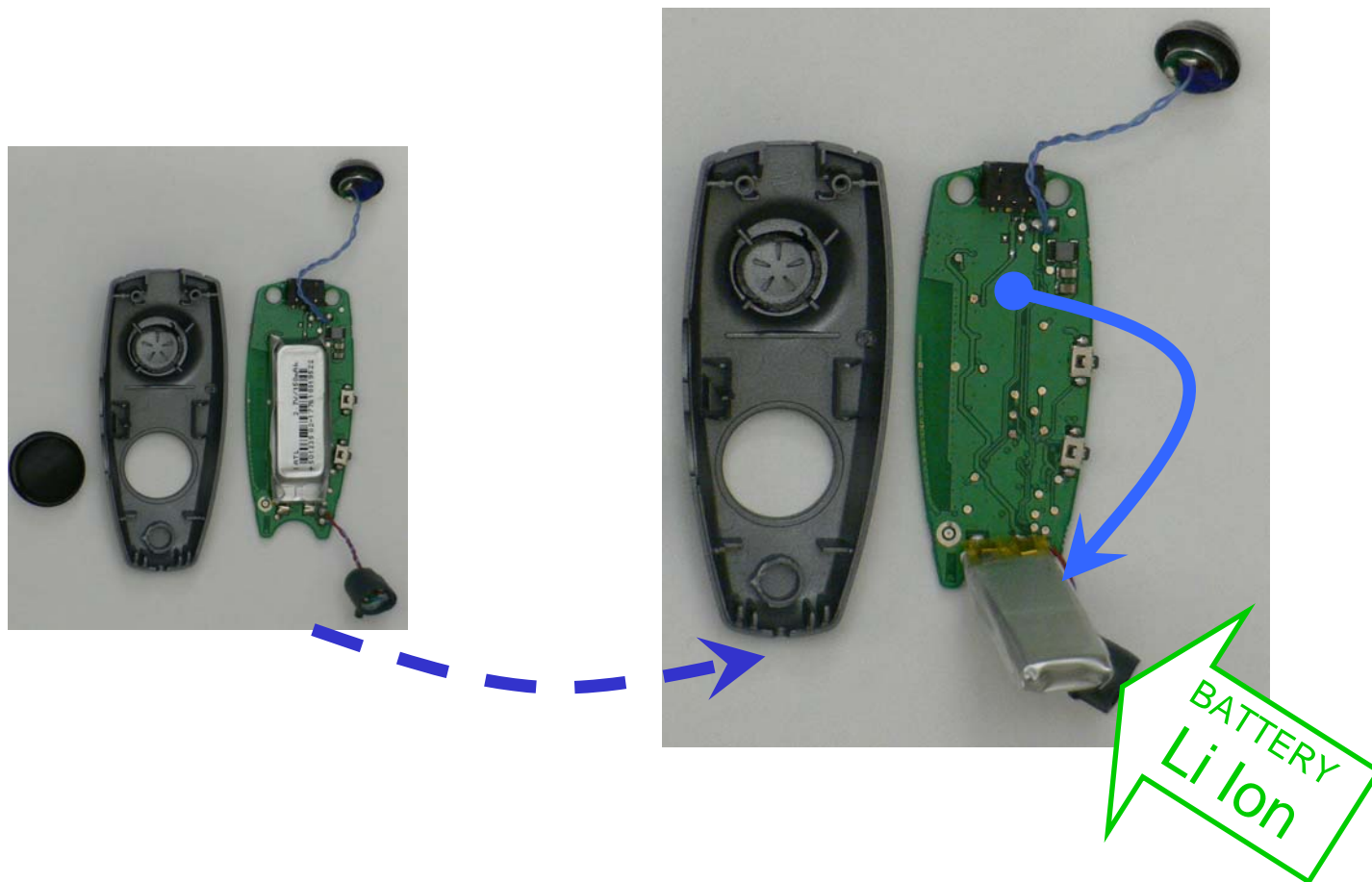
3206.07 REMOVE PCBA FROM BACK COVER



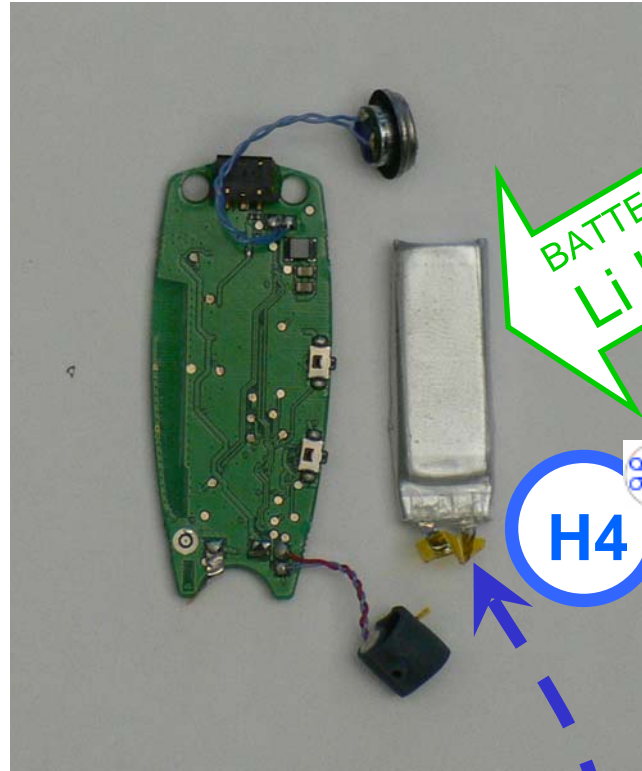
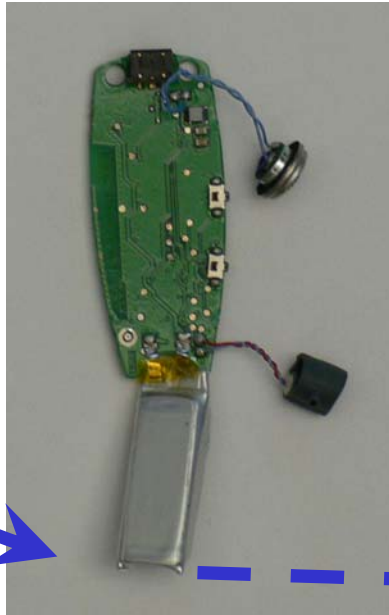
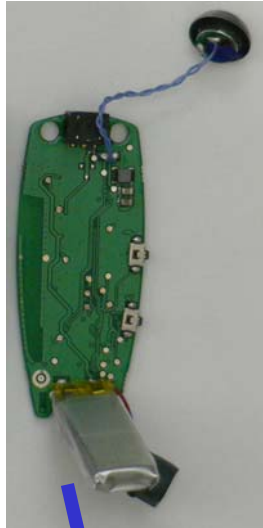
3206.08 REMOVE MICROPHONE, SPEAKER AND SPEAKER COVER



BATTERY
Li Ion



3206.10 LIFT BATTERY FROM PCBA



Disassembly Instructions for
Palm® Treo™ Wireless Headset

Only authorized recyclers are permitted to use these disassembly instructions. Any attempted disassembly by a user or unauthorized party will void the product warranty and may irreparably damage the product.

08MAR07



